

216182

PGB04082024

Question Booklet
Version Code

DATE	TIME	MAXIMUM MARKS	TOTAL DURATION	MAXIMUM TIME FOR ANSWERING
04-08-2024	02.30 pm to 04.30 pm	100	150 Minutes	120 Minutes

B2

MENTION YOUR PGCET NUMBER								QUESTION BOOKLET DETAILS	
								VERSION CODE	SERIAL NUMBER
1	3	0	1	0	0	0	3	0	B2

Dos:

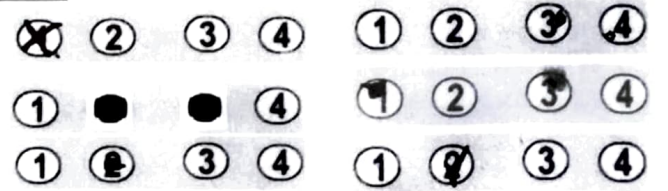
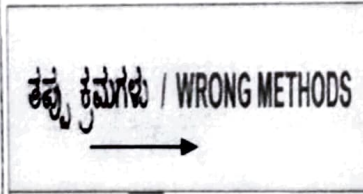
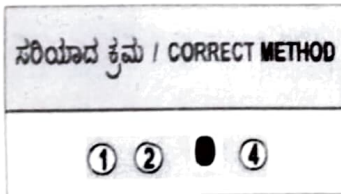
1. This question booklet is issued to you by the invigilator after the 2nd bell i.e., after 2.25 pm.
2. Check whether the PGCET Number has been entered and shaded in the respective circles on the OMR answer sheet.
3. The version code and serial number of this question booklet should be entered on the OMR answer sheet and the respective circles should also be shaded completely.
4. The Version Code and Serial Number of this question booklet should be entered on the Nominal Roll without any mistakes.
5. Compulsorily sign at the bottom portion of the OMR answer sheet in the space provided.

DONTs:

1. The timing and marks printed on the OMR answer sheet should not be damaged / mutilated / spoiled.
2. The 3rd Bell rings at 02.30 pm, till then;
 - Do not remove the seal present on the right hand side of this question booklet.
 - Do not; look inside this question booklet or start answering on the OMR answer sheet.

IMPORTANT INSTRUCTIONS TO CANDIDATES

1. In case of usage of signs and symbols in the questions, the regular textbook connotation should be considered unless stated otherwise.
2. This question booklet contains 100 questions and each question will have one statement and four different options / responses & out of which you have to choose one correct answer.
3. After the 3rd Bell is rung at 02.30 pm, remove the paper seal on the right hand side of this question booklet and check that this booklet does not have any unprinted or torn or missing pages or items etc., if so, get it replaced by a complete test booklet. Read each item and start answering on the OMR answer sheet.
4. Completely **darken / shade** the relevant circle with a **blue or black ink ballpoint pen against the question number on the OMR answer sheet.**



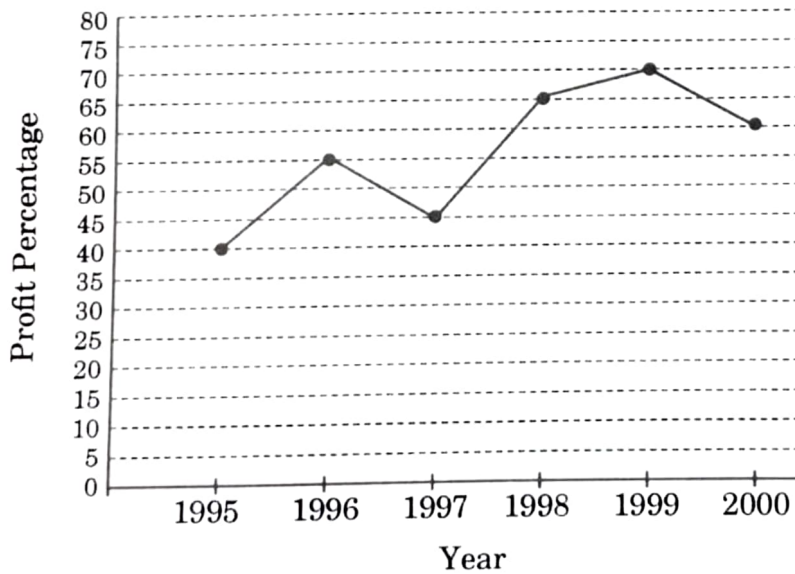
5. Please note that even a minute unintended ink dot on the OMR answer sheet will also be recognized and recorded by the scanner. Therefore, avoid multiple markings of any kind on the OMR answer sheet.
6. Use the space provided on each page of the question booklet for Rough Work. Do not use the OMR answer sheet for the same.
7. **Last bell will ring at 4.30 pm, stop marking on the OMR answer sheet.**
8. Hand over the **OMR answer sheet** to the room invigilator as it is.
9. After separating the top sheet (OFFICE copy), the invigilator will return the bottom sheet replica (candidate's copy) to you to **carry home for self-evaluation.**

1. A sum of ₹ 800 amounts to ₹ 920 in 3 years at simple interest. What would be the amount, if interest rate is increased by 3% ?
 (1) ₹ 800 (2) ₹ 192
 (3) ₹ 992 (4) ₹ 120
2. In a 100 m race, A runs at 8 km per hour. If A gives B a start of 4 m and still beats him by 15 seconds, what is the speed of B ?
 (1) 2.40 km/hr (2) 6.76 km/hr
 (3) 3.76 km/hr (4) 5.76 km/hr
3. The perimeter of two squares are 40 cm and 32 cm. The perimeter of a third square whose area is equal to the difference of the areas of the two squares is :
 (1) 36 cm (2) 24 cm
 (3) 16 cm (4) 40 cm
4. In what ratio must water be mixed with milk to gain 20% by selling the mixture at cost price ?
 (1) 1 : 5 (2) 5 : 1 (3) 1 : 6 (4) 5 : 6
5. Two pipes can fill a tank in 10 hours and 12 hours respectively, while a third pipe empties the full tank in 20 hours. If all the three pipes operate simultaneously, what is the time required to fill the tank ?
 (1) 7 hours 30 minutes (2) 6 hours
 (3) 6 hours 30 minutes (4) 8 hours
6. Peter can cover a certain distance in 1 hour 24 minutes by covering two-thirds of the distance at 4 kmph and the rest at 5 kmph. The total distance is :
 (1) 5.5 km (2) 6.5 km (3) 5 km (4) 6 km
7. What will come in place of the question mark (?) in the following question ?

$$\frac{120 - 22 \times 6 \div 2}{\frac{1}{4} \text{ of } 256 \div 16 + 2} = ?$$

 (1) 9 (2) $3\frac{1}{3}$ (3) 6 (4) 8

8. A dealer sold three-fourth of his articles at a gain of 20% and the remaining at cost price. What is the gain earned by him in the whole transaction ?
- (1) 13% (2) 15%
(3) 10% (4) 12%
9. Mr. Jones gave 40% of the money he had, to his wife. He also gave 20% of the remaining amount to each of his three sons. Half of the amount now left was spent on miscellaneous items and the remaining amount of ₹ 12,000 was deposited in the bank. What amount of money did Mr. Jones have initially ?
- (1) ₹ 1,00,000 (2) ₹ 1,50,000
(3) ₹ 75,000 (4) ₹ 1,25,000
10. The average of 25 results is 18. The average of the first twelve of them is 14 and that of the last twelve is 17. What is the thirteenth result ?
- (1) 75 (2) 78 (3) 60 (4) 65
11. The following line graph gives the annual percent profit earned by a company during the period 1995 – 2000. If the income in 1998 was ₹ 264 crores, what was the expenditure in 1998 ?



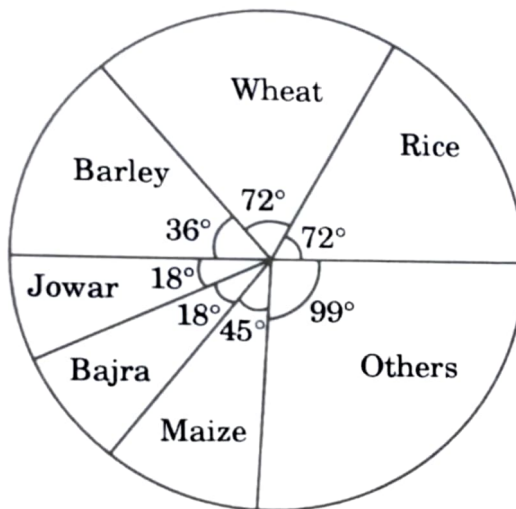
- (1) ₹ 104 crores (2) ₹ 145 crores
(3) ₹ 160 crores (4) ₹ 185 crores

Space for Rough Work / ಕಚ್ಚಾ ಕೆಲಸಕ್ಕೆ ಸ್ಥಳ

12. What will come in place of the question mark (?) in the equation $38^2 + 63^2 + (?)^2 = 6089$?

- (1) 26
- (2) 24
- (3) 28
- (4) 32

13. The pie chart provided below gives the distribution of land in a village under various food crops. Which combination of three crops contribute to 50% of the total area under the food crops ?



- (1) Wheat, Barley and Jowar
- (2) Rice, Wheat and Jowar
- (3) Rice, Wheat and Barley
- (4) Bajra, Maize and Rice

-
- A bar chart titled "Percentage distribution of Total Expenditure of a Company". The vertical axis is labeled "Percentage Distribution" and ranges from 0 to 25 in increments of 5. The horizontal axis lists seven expenditure categories. Each category has a corresponding bar with diagonal hatching, and the exact percentage value is labeled above each bar.
- | Category | Percentage Distribution |
|--------------------------|-------------------------|
| Infrastructure | 20 |
| Transport | 12.5 |
| Advertisement | 15 |
| Taxes | 10 |
| Research and Development | 5 |
| Salary | 20 |
| Interest on loans | 17.5 |

$$\begin{array}{ll} (1) & 5:4 \\ (2) & 8:7 \\ (3) & 9:7 \\ (4) & 13:11 \end{array}$$

15. A sum of money amounts to ₹ 6690 after 3 years and ₹ 10,035 after 6 years on compound interest. The sum is :
- (1) ₹ 4460 (2) ₹ 5460
(3) ₹ 6640 (4) ₹ 3420
16. The sum of the squares of three consecutive odd numbers is 2531. The numbers are :
- (1) 27, 29 and 31 (2) 28, 30 and 32
(3) 29, 30 and 31 (4) 29, 31 and 32

17. If 'x' stands for addition, '+' stands for subtraction, '÷' stands for multiplication and '÷' stands for division, then

$$12 \times 8 \div 16 - 4 + 6 =$$

- (1) 8
- (2) 28
- (3) 38
- (4) 3

18. A student got twice as many questions wrong as he got right. If he attempted 48 questions in all, how many did he answer correctly ?

- (1) 12
- (2) 13
- (3) 14
- (4) 16

19. There are 50 students in a class. Some can speak only English and some can speak only Hindi. Ten students can speak both Hindi and English. If the number of students who can speak English is 21, then how many students can speak Hindi, and how many students can speak only Hindi, and how many can speak only English ?

- (1) 39, 29 and 11 respectively
- (2) 37, 27 and 13 respectively
- (3) 28, 18 and 22 respectively
- (4) 27, 11 and 29 respectively

20. $(20)^2 - \sqrt{324} =$

- (1) 400
- (2) 18
- (3) 382
- (4) 328

21. Choose the word which is closest in meaning to the word given below.

EXEMPLARY

- | | |
|---------------|-----------------|
| (1) Perpetual | (2) Outstanding |
| (3) Eluding | (4) Impartial |

22. Choose the word which is opposite in meaning to the word given below.

FERVOUR

- | | |
|-------------|------------|
| (1) Ardor | (2) Zeal |
| (3) Passion | (4) Apathy |

23. Choose the correct meaning of the underlined phrase.

Nowadays, on TV channels, reality shows are becoming the order of the day.

- (1) Something that is negligible
- (2) Something that is a must
- (3) Something that is stylish and attractive
- (4) Something that is very common or important

24. Fill in the blank with the best suitable expression.

Geetha's friends _____ her as her parents were poor.

- | | |
|--------------------|----------------------|
| (1) looked up on | (2) looked down on |
| (3) looked up with | (4) looked down with |

25. Different parts of a sentence are given in a jumbled order. These parts are numbered. Choose the answer from the options given to form a meaningful sentence.

- I. the parents
- II. when they were in France
- III. to their children
- IV. could not teach
- V. Hindi

- | | |
|---------------------------|---------------------------|
| (1) V - IV - I - III - II | (2) II - I - IV - III - V |
| (3) I - IV - III - V - II | (4) I - IV - V - III - II |

Space for Rough Work / ಕಚ್ಚಾ ಕೆಲಸಕ್ಕೆ ಸ್ಥಳ

26. Different parts of a sentence are given in a jumbled order. These parts are numbered. Choose the answer from the options given to form a meaningful sentence.

- I. advanced technologies
- II. in medical research
- III. are revolutionizing
- IV. how we fight diseases

- (1) I - II - IV - III
- (2) I - III - II - IV
- (3) I - III - IV - II
- (4) I - II - III - IV

27. Fill in the blank with the most appropriate option given below and complete the sentence.

I don't like to go to _____ dentist regularly.

- (1) the
- (2) a
- (3) an
- (4) None of the above

28. Complete the sentence using the most appropriate option given below :

It's _____ restaurant in the town.

- (1) a costly
- (2) a costlier
- (3) the costliest
- (4) None of the above

29. Choose the sentence which is grammatically correct from the options given below.

- (1) I asked them what they were doing.
- (2) I asked them what were they doing.
- (3) I asked them what have they been doing.
- (4) I asked to them what they were doing.

30. Choose the passive form of the sentence "They will demolish the entire block." from the options given below.

- (1) The entire block will have to be demolished by them.
- (2) The entire block is being demolished.
- (3) They will be demolished the entire block.
- (4) The entire block will be demolished by them.

Space for Rough Work / ಕಚ್ಚಾ ಕೆಲಸಕ್ಕೆ ಸ್ಥಳ

31. Choose the sentence which is grammatically correct from the options given below.

- (1) Why should the students be afraid of English language is not clear.
- (2) Why should be the students afraid of English language is not clear.
- (3) Why are the students afraid of English language is not clear.
- (4) Why the students should be afraid of English language is not clear.

32. Choose the correct one-word substitute for :

An unconventional style of living.

- | | |
|-----------------|--------------|
| (1) Misanthrope | (2) Autonomy |
| (3) Bohemian | (4) Monarchy |

33. There are five sentences marked as I, II, III, IV and V. The position of I is fixed as the first sentence of the passage.

Choose one of the four alternatives given below as the most logical sequence of the sentences in the passage.

- I. S.S. Titanic was so superior to anything else on the seas that it was dubbed ‘unsinkable’.
 - II. Panic increased the number of casualties as people jumped into the icy waters or fought to board the life boats.
 - III. Because the luxury liner was travelling so fast, it was impossible to avoid the ghostly looking iceberg.
 - IV. It was only two days at sea and more than halfway between England and its New York destination.
 - V. An unextinguished fire also contributed to the ship’s submersion.
- (1) II - III - IV - V (2) III - IV - V - II
- (3) IV - III - V - II (4) V - IV - III - II

34. There are four parts to the sentence marked A, B, C and D. Choose one of the four alternatives given below as the most logical sequence of the parts to form a correct sentence.

If you have to do minor home repairs / you can save money / yourself / the time and the skills

A B C D

- (1) DCAB (2) DACB (3) ACBD (4) ABCD

Space for Rough Work / ಕಚ್ಚಾ ಕೆಲಸಕ್ಕೆ ಸ್ಥಳ

35. Select the most appropriate form of word/phrase from the alternatives given and complete the sentence.

The baby kept on crying while it _____.

- | | |
|----------------------|---------------------|
| (1) is bathed | (2) was bathed |
| (3) was being bathed | (4) is being bathed |

36. Choose the word with the correct spelling from the given options.

- | | |
|---------------|---------------|
| (1) guarantee | (2) gaurantee |
| (3) garantee | (4) guarentee |

37. Who is the author of *Othello* ?

- | | |
|-------------------------|-------------------------|
| (1) William Wordsworth | (2) William Morris |
| (3) William Shakespeare | (4) Christopher Marlowe |

38. Which of the following work is written by Charles Dickens ?

- (1) *Hard Times*
- (2) *Midnight's Children*
- (3) *Sons and Lovers*
- (4) *Time Machine*

39. There are four parts to the sentence that have been underlined and marked A, B, C and D. Choose the part that has an error.

I am very worried as neither of my brothers have returned from the picnic.

A

B

C

D

- (1) A
- (2) B
- (3) C
- (4) D

40. A man who is womanish in his habits is called _____.

- (1) Feminine
- (2) Effeminate
- (3) Transgender
- (4) Womanine

Space for Rough Work / ಕಚ್ಚಾ ಕೆಲಸಕ್ಕೆ ಸ್ಥಳ

41. Which of the following is the largest memory size ?

- (1) TB (2) GB (3) MB (4) KB

42. Consider the following lists :

<i>Operating System</i>	<i>Company</i>
a. Windows	i. Open Source
b. Linux	ii. Apple
c. OS X	iii. Microsoft
d. Android	iv. Google

Identify the correct match.

- (1) a – i, b – iii, c – iv, d – ii (2) a – ii, b – iii, c – iv, d – i
(3) a – iii, b – i, c – ii, d – iv (4) a – iv, b – iii, c – ii, d – i

43. ASCII stands for _____.

- (1) American Standard Code for Information Interchange
(2) American Standard Code of International Interchange
(3) American Scientific Code for Information Interchange
(4) American Scientific Code for International Interchange

44. The base of hexadecimal number system is _____.

- (1) 16 (2) 10 (3) 8 (4) 2

45. A source program is written in _____ language.

- (1) Symbolic (2) Machine level
(3) Assembly level (4) High-level

46. The two's complement of a binary number is obtained by adding _____ to its one's complement.

- (1) 1 (2) 0 (3) 10 (4) 11

47. The program that analyses and executes the source code line-by-line is called _____.

- (1) Compiler (2) Interpreter
(3) Assembler (4) Operating System

Space for Rough Work / ಕಚ್ಚಾ ಕೆಲಸಕ್ಕೆ ಸ್ಥಳ

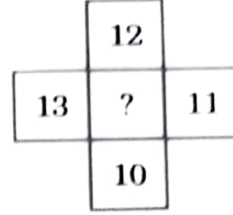
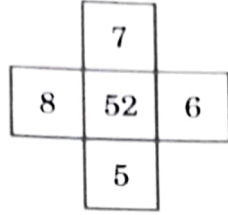
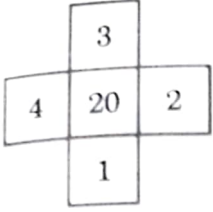
48. The decimal equivalent of $10010_{(2)}$ is _____.
- (1) $16_{(10)}$ (2) $21_{(10)}$
 (3) $18_{(10)}$ (4) $24_{(10)}$
49. Query language comes under _____ generation programming languages.
- (1) second (2) third
 (3) fourth (4) fifth
50. Which of the following Operating System reads and reacts in actual time ?
- (1) Multi-user system (2) Real-time system
 (3) Batch Processing system (4) Multiprocessor system
51. _____ is the screen that appears with all the icons when a computer is turned on.
- (1) Menu (2) Taskbar
 (3) Spreadsheet (4) Desktop
52. The program required to load an Operating System is _____.
- (1) RAM BIOS (2) ROM BIOS
 (3) EPROM (4) POST
53. Which of the following is used in aptitude test ?
- (1) MICR (2) POS (3) OCR (4) OMR
54. Consider the following :
- | | |
|-------------|----------------|
| a. Virus | i. Motherboard |
| b. Hardware | ii. Malware |
| c. Software | iii. Oracle |
| d. RDBMS | iv. Program |
- Which of the following matches is correct ?
- (1) a – ii, b – i, c – iv, d – iii (2) a – iii, b – i, c – ii, d – iv
 (3) a – iii, b – iv, c – i, d – ii (4) a – iv, b – iii, c – i, d – ii
55. The collection of 8 bits is called _____.
- (1) Word (2) Nibble (3) Byte (4) Record

Space for Rough Work / ಕಚ್ಚಾ ಕೆಲಸಕ್ಕೆ ಸ್ಥಳ

56. What will come in place of the question mark (?) in the following question ?
 $50\% \text{ of } 6000 + 20\% \text{ of } ? = 4000$
 (1) 3000 (2) 6000 (3) 5000 (4) 4500
57. If twice the numerator of a fraction is decreased by 50% and thrice the denominator is increased by 200%, the resultant fraction is $\frac{121}{150}$. What was the original fraction ?
 (1) $\frac{1100}{150}$ (2) $\frac{1098}{150}$
 (3) $\frac{1089}{150}$ (4) $\frac{9810}{150}$
58. In the series 3, 9, 15, 21, _____, what is the 20th term ?
 (1) 100 (2) 107 (3) 112 (4) 117
59. Find the wrong term in the following number series.
 1, 1, 2, 4, 3, 6, 4, 16
 (1) 4 (2) 3 (3) 6 (4) 16
60. What terms will fill the blank space in the following series ?
 A, Z, X, B, V, T, C, R, _____, _____
 (1) P, D (2) E, O (3) Q, F (4) O, Q
61. The missing term in the following series
 KM5, IP8, GS11, EV14, _____ is :
 (1) BX17 (2) BY17 (3) CY17 (4) CZ17
62. If in a certain code MONDAY is coded as OPPECZ, then which word is coded as RECORD ?
 (1) PCAMPB (2) PDANPC
 (3) QDBNQC (4) PDAMQC
63. A group of eight girls are sitting in a circle. Deepa is between Arathi and Farah, and is opposite Geetha. Esha is to the right of Arathi but to the left of Chaitra, whose right hand neighbour is Geetha. Beena enjoys having Hamsa to her left and Farah to her right. Find the member who is diagonally opposite to Arathi.
 (1) Hamsa (2) Beena (3) Farah (4) Chaitra

64. Among 5 children, Vimal is taller than Mallika but not as tall as Raju. Jasmine is taller than Deepa but shorter than Mallika. Who is the tallest in the group ?
- (1) Mallika (2) Vimal
(3) Raju (4) Jasmine
65. P, Q, R, S are playing cards. P and Q are partners. S faces North. If P faces towards West, then who faces towards South ?
- (1) Q (2) R
(3) S (4) Data inadequate
66. How many pairs of letters are there in the word 'EFFECT' which have as many letters between them in the word as in the alphabet ?
- (1) 1 (2) 2 (3) 3 (4) 4
67. In a row of students, A is sitting 14th from the left and B is 7th from the right. If there are four students between A and B, how many students are there in the row ?
- (1) 25 (2) 23 (3) 21 (4) 19
68. If the 5th day of a month is 3 days before Saturday, what day will it be on the 20th day of the month ?
- (1) Monday (2) Tuesday
(3) Wednesday (4) Thursday
69. Ashish has a certain number of boxes to pack into a parcel. If he packs 3, 4, 5 or 6 in a parcel, he is left with 1 and if he packs 7 in a parcel, none is left over. What is the number of boxes he has ?
- (1) 108 (2) 301 (3) 309 (4) 400
70. A group of 240 persons consisting of students and teachers is travelling in a train. For every 15 students, there is one teacher. Then, the number of teachers is _____.
- (1) 12 (2) 13 (3) 14 (4) 15
71. A father is 3 times as old as his son. Five years back he was 7 times as old as his son. The age of the son is _____.
- (1) 20 (2) 25 (3) 15 (4) 30

72. What number should replace the question mark (?) ?



- (1) 102 (2) 100
(3) 92 (4) 90

73. If a 'book' is called 'pencil', 'pencil' is called 'bag', 'bag' is called 'dictionary' and 'dictionary' is called 'door', then what is used to carry the books ?

- (1) pencil (2) bag
(3) dictionary (4) door

74. The train for station B leaves every two and a half hours from station A. An announcement was made at station A that the train for station B had left 40 minutes ago and the next train will leave at 17.00 hours. At what time was the announcement made ?

- (1) 14.30 hours (2) 15.10 hours
(3) 14.10 hours (4) 15.30 hours

75. Given that :

- I. P is the brother of Q
II. R is the father of P
III. S is the brother of T
IV. T is the daughter of Q

Then the uncle of S is :

- (1) P (2) Q
(3) R (4) T

Space for Rough Work / ಕಚ್ಚಾ ಕೆಲಸಕ್ಕೆ ಸ್ಥಳ

76. Read the following Assertion (A) and Reason (R) and choose the correct answer from the given options :

Assertion (A) : The digital divide in India is a serious national issue.

Reason (R) : The concept of knowledge economy will become a reality when the civil society addresses the issue of digital divide.

- (1) Both (A) and (R) are true.
- (2) Both (A) and (R) are true, but (R) is not the correct explanation of (A).
- (3) (A) is true, but (R) is false.
- (4) (A) is false, but (R) is true.

77. In which of the following place is the Vijaya Vittala temple located ?

- (1) Elephanta
- (2) Chidambaram
- (3) Hampi
- (4) Vijayapura

78. Consider the following statements :

- I. The Constitution of India defines its “basic structure” in terms of federalism, secularism, fundamental rights and democracy.
- II. The Constitution of India provides for judicial review to safeguard the citizens’ liberties and to preserve the ideals on which the Constitution is based.

Which of the statements given above is/are correct ?

- (1) Only I
- (2) Only II
- (3) Both I and II
- (4) Neither I nor II

79. Consider the following events and arrange them in chronological order using the codes given below :

- I. Partition of Bengal
- II. Transfer of the capital of the Central Government from Calcutta to Delhi
- III. Congress Split
- IV. Formation of Muslim League

- (1) I, III, II, IV
- (2) I, IV, II, III
- (3) I, II, III, IV
- (4) I, IV, III, II

Space for Rough Work / ಕಚ್ಚಾ ಕೆಲಸಕ್ಕೆ ಸ್ಥಳ

80. According to Winer (2001), blog posts canonically encode in this formation :

I. Title and Text

II. Tags/Categories

III. Author

IV. Time of Publication

V. URL

Options :

(1) I, III, II, V, IV

(2) I, II, III, IV, V

(3) I, IV, II, V, III

(4) III, IV, I, V, II

81. In which year did India host the Commonwealth Games for the first time ?

(1) 1998

(2) 2002

(3) 2010

(4) 2014

82. Read the following Assertion (A) and Reason (R) and choose the correct answer from the given options :

Assertion (A) : Pravasi Bharatiya Divas is celebrated on 9th January every year to mark the contribution of the overseas Indian community to the development of India.

Reason (R) : 9th January was chosen as the day to celebrate the occasion because on this day in 1915, Mahatma Gandhi returned to India from South Africa.

(1) Both (A) and (R) are true, and (R) is the correct explanation of (A).

(2) Both (A) and (R) are true, but (R) is not the correct explanation of (A).

(3) (A) is true, but (R) is false.

(4) (A) is false, but (R) is true.

83. Identify the chronological order of Dadasaheb Phalke award winners :

(1) D. Ramanaidu, Tapan Sinha, Manoj Kumar, Soumitra Chatterjee

(2) Manoj Kumar, Soumitra Chatterjee, D. Ramanaidu, Tapan Sinha

(3) Manoj Kumar, Tapan Sinha, Soumitra Chatterjee, D. Ramanaidu

(4) Tapan Sinha, D. Ramanaidu, Soumitra Chatterjee, Manoj Kumar

84. Which chemical process is primarily used in the production of ammonia for fertilizers ?

(1) Ostwald process

(2) Haber-Bosch process

(3) Contact process

(4) Solvay process

Space for Rough Work / ಕಚ್ಚಾ ಕೆಲಸಕ್ಕೆ ಸ್ಥಳ

85. Operation Blue Star was an operation that was carried out by the Indian military in June 1984 to flush out militants from the premises of which of the following buildings ?
- (1) Golden Temple, Amritsar
 - (2) Babri Masjid, Ayodhya
 - (3) Parliament Building, New Delhi
 - (4) Victoria Terminus, Mumbai
86. With reference to Visible Light Communication (VLC) technology, which of the following statements are correct ?
- I. VLC uses electromagnetic spectrum wavelengths 375 to 780 nm.
 - II. VLC is known as long-range optical wireless communication.
 - III. VLC can transmit large amounts of data faster than Bluetooth.
 - IV. VLC has no electromagnetic interference.
- (1) Only I, II and III
 - (2) Only I, II and IV
 - (3) Only I, III and IV
 - (4) Only II and III
87. Which sociologist introduced the concept of the "Sociological imagination" ?
- (1) Max Weber
 - (2) Emile Durkheim
 - (3) Talcott Parsons
 - (4) C. Wright Mills
88. Consider the following statements :
- I. Genetic changes can be introduced in the cells that produce eggs or sperms of a prospective parent.
 - II. A person's genome can be edited before birth at the early embryonic stage.
 - III. Human induced pluripotent stem cell can be injected into the embryo of a pig.
- Which of the statement/s given above is/are correct ?
- (1) Only I
 - (2) Only II and III
 - (3) Only II
 - (4) I, II and III

Space for Rough Work / ಕಚ್ಚಾ ಕೆಲಸಕ್ಕೆ ಸ್ಥಳ

89. Read the following Assertion (A) and Reason (R) and choose the correct answer from the given options :

Assertion (A) : Three new criminal laws, the Bharatiya Nyaya Sanhita (BNS), Bharatiya Nagarik Suraksha Sanhita (BNSS), and Bharatiya Sakshya Adhiniyam (BSA) which took effect from 1st July 2024, replace the colonial-era Indian Penal Code (IPC), the Code of Criminal Procedure (CrPC) and Indian Evidence Act.

Reason (R) : The new laws aim to replace colonial-era punishments with a justice-focused approach, integrating technological advancements in police investigations and court procedures.

- (1) Both (A) and (R) are true and (R) is the correct explanation of (A).
 - (2) Both (A) and (R) are true, but (R) is not the correct explanation of (A).
 - (3) (A) is true, but (R) is false.
 - (4) (A) is false, but (R) is true.
90. The concept of "Minimum Support Price" in India is related to
- (1) Export subsidies for agricultural products
 - (2) Guaranteed price support to farmers for their produce
 - (3) Tax exemption for agricultural machinery
 - (4) Interest subsidies on agricultural loans
91. 'Kudumbashree' is a community organisation of neighbourhood groups which brings together women from all walks of life to remove poverty and promote empowerment. In which of the following states is it located ?
- (1) Karnataka
 - (2) Tamil Nadu
 - (3) Kerala
 - (4) Andhra Pradesh
92. Read the following Assertion (A) and Reason (R) and choose the correct answer from the given options :
- Assertion (A) :* India's victory over Pakistan in the 1971 War would not have been possible without Soviet assistance.
- Reason (R) :* The Soviet Union deployed a fleet of nuclear-armed warships which successfully prevented the U.S. and the British warships from interfering in the war.
- (1) Both (A) and (R) are true and (R) is the correct explanation of (A).
 - (2) Both (A) and (R) are true, but (R) is not the correct explanation of (A).
 - (3) (A) is true, but (R) is false.
 - (4) Both (A) and (R) are false.

Space for Rough Work / ಕಚ್ಚಾ ಕೆಲಸಕ್ಕೆ ಸ್ಥಳ

93. Consider the following pairs :

93.

<i>International agreement / set-up</i>	<i>Subject</i>
I. Alma-Ata Declaration	– Health care of the people
II. Hague Convention	– Biological and Chemical weapons
III. Talanoa Dialogue	– Global climate change
IV. Under2 Coalition	– Rights of the child

Which of the pairs given above is/are correctly matched ?

- (1) Only I and II
- (2) Only IV
- (3) Only I and III
- (4) Only II, III and IV

94. With respect to the 'shares of a company', which of the following statements is/are correct ?

94

- I. A share is treated as a "Good" under Sale of Goods Act.
- II. A person who holds the share of a public limited company has the right to transfer his/her share.
- III. A share makes a person owner of assets of the company.

Select the correct option from the codes given below :

- (1) Only I
- (2) Only I and II
- (3) Only II and III
- (4) I, II and III

95. The term "Liquidity Trap" in economics refers to a situation where :

9

- (1) Interest rates are high, leading to reduced investment
- (2) Consumer spending declines due to inflationary pressures
- (3) Monetary policy becomes ineffective as interest rates approach zero
- (4) Excess liquidity causes asset bubbles in the financial markets

Space for Rough Work / ಕಚ್ಚಾ ಕೆಲಸಕ್ಕೆ ಸ್ಥಳ

96. 'Matki' is the popular folk dance form of which of the following states ?

- (1) Assam (2) Madhya Pradesh
(3) Bihar (4) Rajasthan

97. What is the name of the automated situational awareness system in Indian Railways that provides automated train protection as well as collision prevention capabilities for trains ?

- (1) Kavach
(2) Collision Avoidance System (CAS)
(3) Automatic Train Protection (ATP) system
(4) Zero Accident System (ZAS)

98. Match the following :

List I	List II
a. Flood	i. Lack of rainfall for sufficient duration
b. Drought	ii. Tremors produced by the passage of vibratory waves through the rocks of the earth
c. Earthquake	iii. A vent through which molten substances come out
d. Volcano	iv. Excess rain and uneven distribution of water

Options :

- (1) a-ii, b-iii, c-i, d-iv (2) a-ii, b-i, c-iii, d-iv
(3) a-i, b-iv, c-iii, d-ii (4) a-iv, b-i, c-ii, d-iii

99. The Treaty of Mangalore was signed after _____.

- (1) Second Anglo-Mysore War (2) Third Carnatic War
(3) First Anglo-Mysore War (4) Third Anglo-Mysore War

100. The International Day of Yoga recognized by the United Nations is celebrated worldwide annually on

- (1) June 21 (2) July 1
(3) August 15 (4) September 27

Space for Rough Work / ಕಚ್ಚಾ ಕೆಲಸಕ್ಕೆ ಸ್ಥಳ